

Life for the Poor in Rotherham in 1865

Images:

Source A: Wellgate, Rotherham

Source B: Wellgate School

Source C: Iron moulders

Source D: Guest and Chrimes, Brass Moulders

Source E: Effingham Works, Thames Street, Masbrough

Picture Questions

1. Describe the people that you see in the pictures. What are they wearing?
2. Describe the buildings that you see in the picture
3. From their appearance do you think these people had much money?

Source F: OS map of Masbrough

Map Questions:

1. How big are the houses and how close together are they?
2. What types of industries are there around Masbrough?
3. From the pictures and the house marked in red on Glasshouse Street, what do you think people that lived in this area would see and smell?

Would you have liked to live in this area? Why?

Feedback your findings to the class.

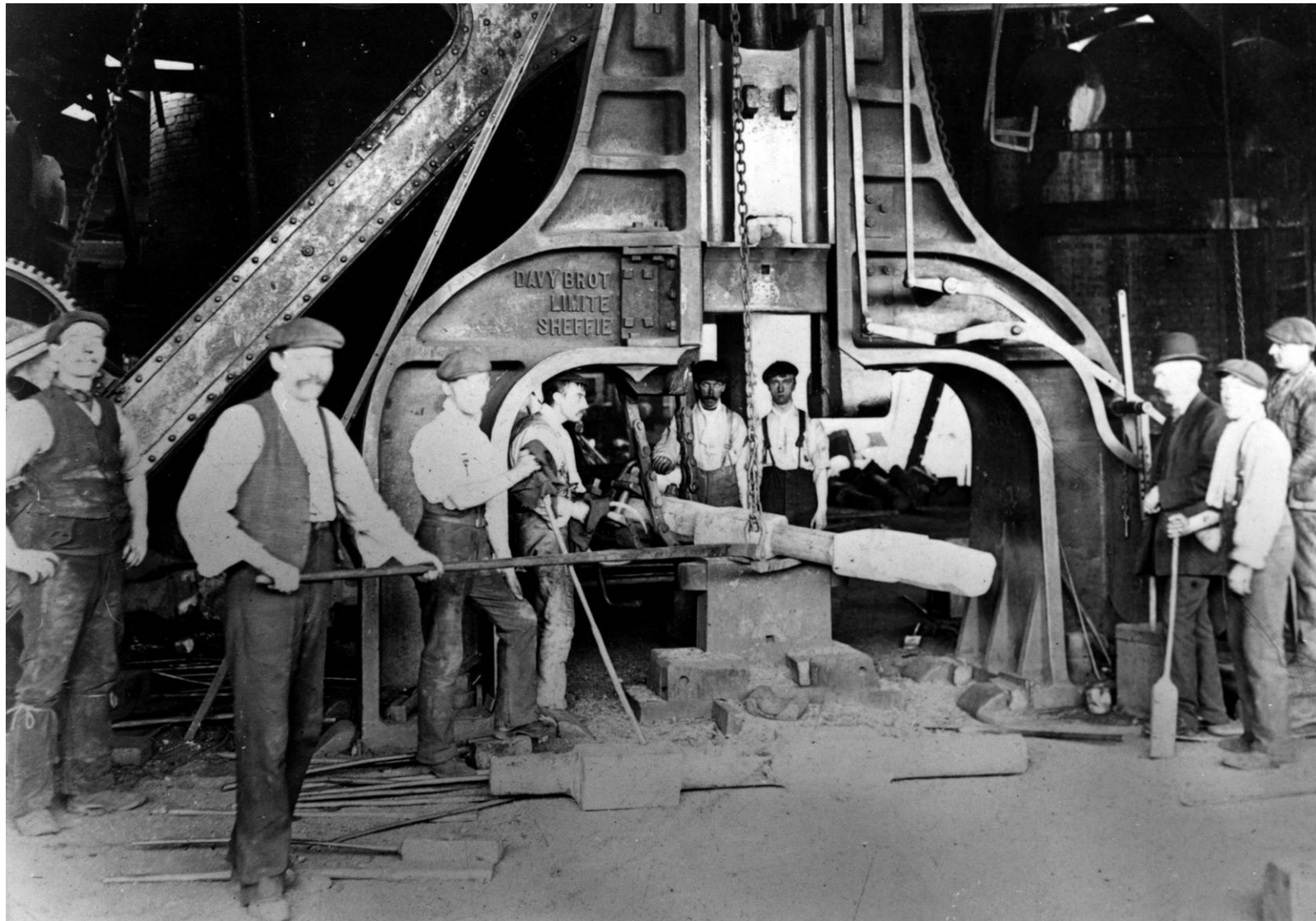
As a class decide whether you would have liked to be rich or poor in Rotherham in 1865.



Source A: Wellgate, Rotherham



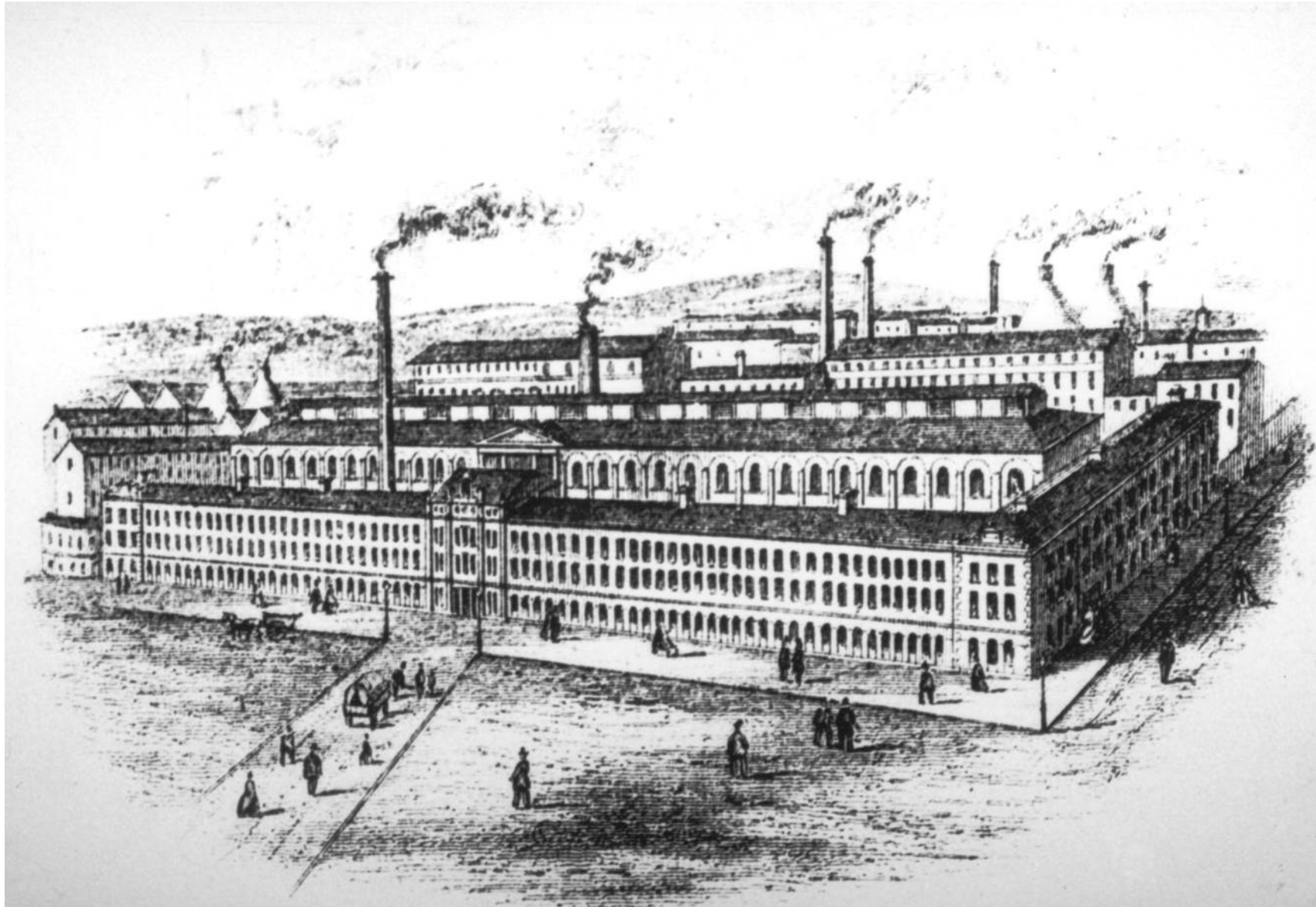
Source B: Wellgate School



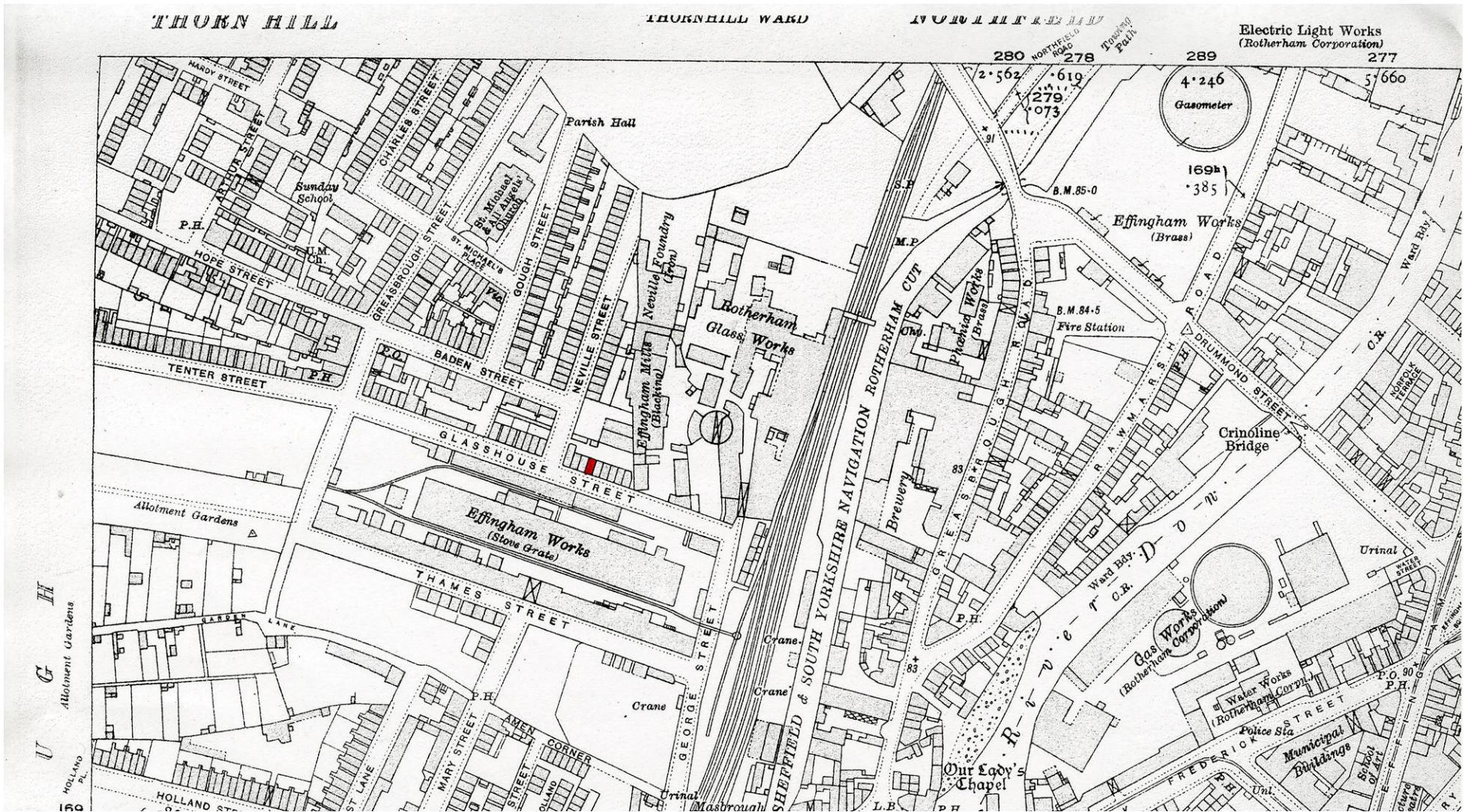
Source C: Iron Moulders



Source D: Guest and Chrimes, Brass Moulders



Source E: Effingham Works, Thames Street, Masbrough



Source F: Ordnance Survey Map of Masbrough