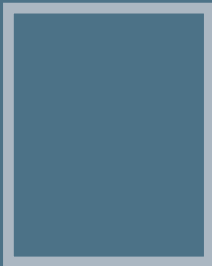


STRATEGIC LEADERSHIP TEAM



John Edwards
Chief Executive



Vacant
Assistant Chief Executive



Judith Badger
Strategic Director
Finance & Customer Services



Andrew Bramidge
Strategic Director
Regeneration & Environment



Nicola Curley
Strategic Director
Children & Young People's Services



Ian Spicer
Strategic Director
Adult Care & Housing



Lynsey Linton
Assistant Director
Human Resources



Rob Mahon
Assistant Director
Financial Services



Simon Moss
Assistant Director
Planning Regeneration & Transport



Stuart Williams
Assistant Director
Children's Social Care



Emily Parry-Harries
Director
Public Health



Alexandra Hanna
Head of Communications
& Marketing



Phillip Horsfield
Assistant Director
Legal Services



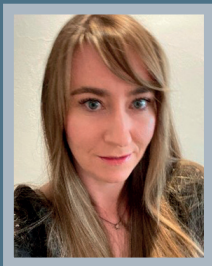
Sam Barstow
Assistant Director
Community Safety & Street Scene



Kelly White
Assistant Director
Family Help



Scott Matthewman
Assistant Director
Strategic Commissioning



Fiona Boden
Head of Policy,
Performance & Intelligence



Luke Sayers
Assistant Director
Customer, Information & Digital



Polly Hamilton
Assistant Director
Culture, Sport & Tourism



Helen Sweaton
Assistant Director
Commissioning & Performance



Kirsty Littlewood
Assistant Director
Adult Care & Integration



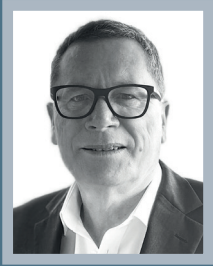
Emma Hill
Head of Democratic Services



Kevin Fisher
Assistant Director
Property and Facilities



Niall Devlin
Assistant Director
Education and Inclusion



John Holman
Interim Assistant Director
Housing



Courine Stewart
Interim Head of
OD and Change



Louise Ivens
Head of Internal Audit



Chris MacDonald
Head of Safeguarding, Quality,
Practice & Supportive Services



Martin Hughes
Head of Neighbourhoods