

PUTTING COMMUNITIES AT THE **HEART** OF EVERYTHING WE DO

Anston and Woodsetts

Ward Plan

2019/20



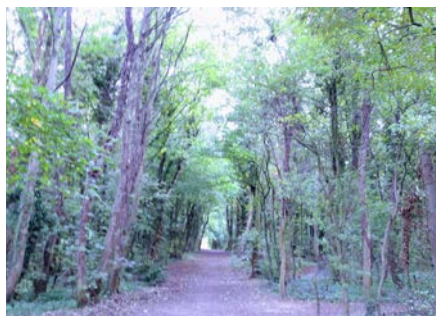
1 Introduction

Your Anston and Woodsetts Ward

Providing vibrant, connected and safe neighbourhoods is a priority for Rotherham Council and communities are at the heart of everything we do.

We were elected as your Anston and Woodsetts Ward Councillors to listen to your views and work with you to make a difference in the local community. We know many of our residents are passionate about making their community a better place to live and we are here to work in partnership and make these improvements a reality.

In order to develop this Ward plan we spoke to you to find out what matters the most. We did this through a number of events and just by speaking to you whilst out and about in the community.



The priorities laid out in this plan will contribute to three key outcomes which are set out in ‘Thriving Neighbourhoods’, our neighbourhood strategy for 2018-2025:

- Neighbourhoods are safe and welcoming with good community spirit
- Residents are happy, healthy and love where they live
- Residents use their skills and assets to contribute to the outcomes that matter to them.

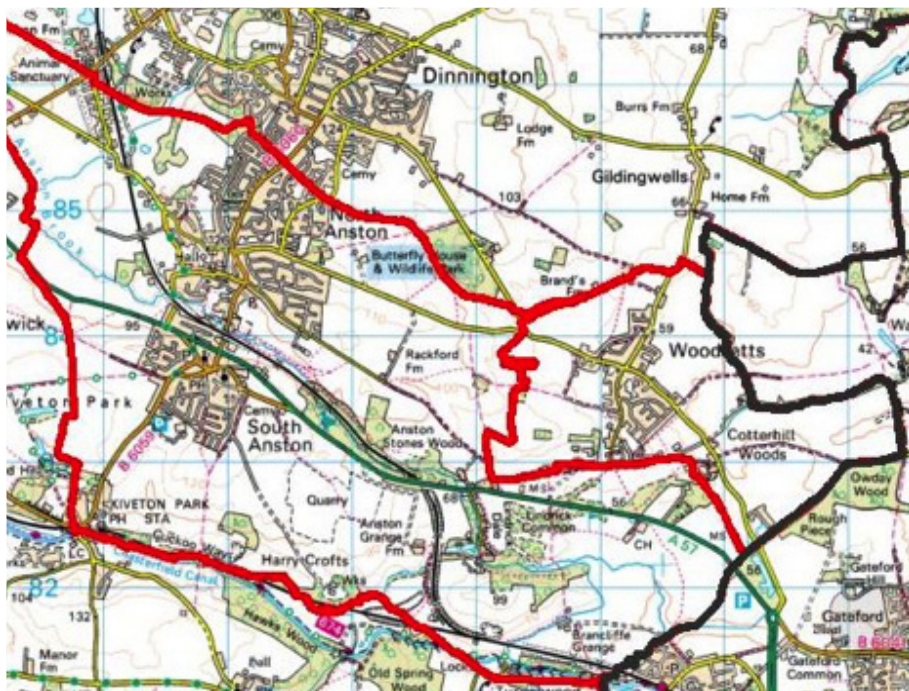
We’re now looking forward to working together to make these priorities come to life. The Ward plan will be updated regularly and placed on the Council website so everyone can see what’s being achieved in Anston and Woodsetts.

If you haven’t yet been involved but want to have your say, it’s not too late. Our contact details are included in this plan so get in touch and help develop and enhance our local community.

Councillors Jonathan Ireland, Clive Jepson and Catharine Wilson

2 Anston Woodsetts Ward today

The Anston and Woodsetts ward includes the localities of North and South Anston and Woodsetts.



Households

- Dwellings in 2016: **4,874** (4,773 in 2011)
- Households in 2016: **4,759** (4,632 in 2011)
- Estimated Tenure: **83%** owner occupied, **9%** social rented, **8%** private rented.
- The number of dwellings in Anston and Woodsetts has increased by

- **101** (+2.1%) since 2011 and there are **127 more households** (+2.8%).

Health

- Anston and Woodsetts had rates of poor health and disability **below the Borough average** in 2011 but higher than the national average in the case of disability, reflected also in DLA claims in 2015.

Deprivation

- Deprivation in Anston and Woodsetts is well below the Borough average and in most of the ward is also well below the national average. There is one neighbourhood which is far more deprived than the ward average, in central North Anston (around Windmill Road and Woodland Drive) which is within the most deprived 10% of England. North Anston and Woodsetts are generally more deprived than South Anston, which is one of the least deprived areas in Rotherham.

5+ GCSE inc English & Maths 2014:
65.1%

(Rotherham 55%, England 53.4%)

Primary and secondary attainment in 2014 was above the Rotherham and national averages.

Highest Level of Qualification (2011 Census):

Degree or diploma 24.0% (Rotherham 17.4%, England 27.4%)

No Qualifications 23.1% (Rotherham 29.8%, England 22.5%)

Education

- Key Stage 2 Level 4 in Reading, Writing & Maths 2014: **83.5%**
(Rotherham 77%, England 78%)

Crime And Anti-Social Behaviour (ASB)

- Levels of recorded crime and ASB in Anston and Woodsetts are less than half the Rotherham average.



3 Ward priorities

For the municipal year 2019/20 your ward councillors have taken a look at refreshing the local priorities to help meet the needs of the community.

After consulting with partners, internal colleagues and, most importantly, the community, the following priorities have been agreed

Anston and Woodsetts

Support local voluntary and community organisations that provide activities and services for:

- older people
- young people and families

To give support around the Woodland Drive area by:

- increasing activities in the community centre to help with its sustainability
- improving facilities for the community play area
- supporting residents

To support initiatives which will look at the health and wellbeing of the ward by:

- funding and fitting defibrillators around the ward
- tackling isolation and loneliness
- increasing awareness around mental health and suicide prevention

To support a clean and safe environment via:

- community litter picking groups and clean up days
- community safety initiatives in hot spot areas



Your Local Councillors

http://www.rotherham.gov.uk/councillors/specificWard/13/anston_and_woodsetts



Jonathan Ireland

jonathan.ireland@rotherham.gov.uk
01709 255862



Clive Jepson

clive.jepson@rotherham.gov.uk
01909 564647



Catherine Wilson

catherine.wilson@rotherham.gov.uk
01709 255929

Surgeries	Cllr Jonathan Ireland	Cllr Clive Jepson	Cllr Katherine Wilson
South Anston Methodist Church	1st Thursday of the month 2:00pm -3:00pm	Last Wednesday of the Month 10 am to 11.00 am	1st Saturday of the month 10.45am -11.45am
North Anston, St James Church Hall	2nd Thursday of the month 9:30am -10:30am		
Woodsetts, St. George's Church	3rd Thursday of the month 9:30am -10:30am		
Anston Parish Hall		2nd Wednesday of the Month 6.30pm -7pm	
Woodsetts Village Hall			2nd Friday of the month, 3pm -4pm
Woodland Drive Community Centre			3rd Tuesday of the month 6pm -7pm
Woodsetts Pavilion		Last Wednesday of the Month 6.30pm -7pm	